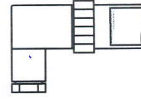


A1 = M16x1.5, IP 65/NEMA 4X
DIN 43650 / A



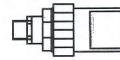
A2 = 1/2 NPT, IP 65/NEMA 4X



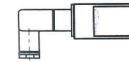
A3 = 5 м, IP 68
NEMA 6P



A4 = M12, IP 66/NEMA 4X



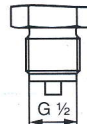
A5 = PG 7, IP 65/NEMA 4X
DIN 43650 / C



Endress+Hauser

Endress+Hauser

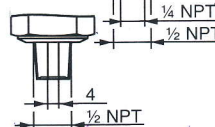
1 = G 1/2, ISO 228



2 = 1/2 MNPT, 1/4 FNPT



3 = 1/2 MNPT, 4 мм



4 = G 1/4, ISO 228



5 = 1/4 MNPT, 3,5 мм



6 = M 20x1.5



B = G 1/2 DIN 3852-A-G 1/2



0 = 4 - 20 мА

5 = 4 - 20 мА, ATEX II 3G EEx nA II T6

1 = 4 - 20 мА, ATEX II 2G Ex ib IIC T6

D = 4 - 20 мА, ATEX II 1/2G Ex ib IIC T6

2 = SP ON../SP OFF..

3 = SP ON../SP OFF., ATEX II 3G EEx nAI IT6

6 = 0 - 10В

1 = Без

2 = Протокол

S = GL/RINA

p

A1G = 0 - 1 бар 0 - 100 кПа

...

R74 = 0 - 6000 фнт/кв. дюйм абс.